



Technical features:

- Steel case and striker, painted amaranth red
- Brass latch and dead-bolt
- Brass draw-back pull and knob

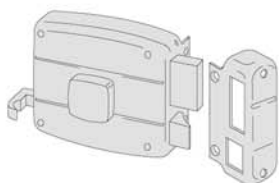
Supplied as standard:

- Striker
- 3 keys item 1.01310.00.1
- Fixing screws

Hand:

- 1 = R.H. inwards
- 2 = L.H. inwards

Type	Description	Cylinder	Throws	Backset	Unit weight 	Pieces 	ITEM			
							Type	Dim.	Hand	Fin.

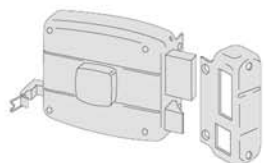


- Inside draw-back pull and knob
- Dead-bolt and latch



1 02500 00 0

2	60	1,025	1	1	50110 60 1
2	60	1,025	1	1	50110 60 2

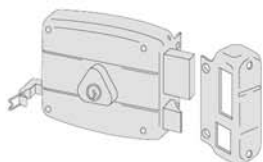


- Inside draw-back pull and knob
- Dead-bolt and latch
- Hold-open device



1 02500 00 0

2	60	1,030	1	1	50330 60 1
2	60	1,030	1	1	50330 60 2



- Inside draw-back pull and cylinder
- Dead-bolt and latch
- Hold-open device



1 02102 00 0

2	40	0,900	1	1	50340 40 1
2	40	0,900	1	1	50340 40 2
2	50	0,960	1	1	50340 50 1
2	50	0,960	1	1	50340 50 2
2	60	1,030	1	1	50340 60 1
2	60	1,030	1	1	50340 60 2
2	70	1,130	1	1	50340 70 1
2	70	1,130	1	1	50340 70 2